

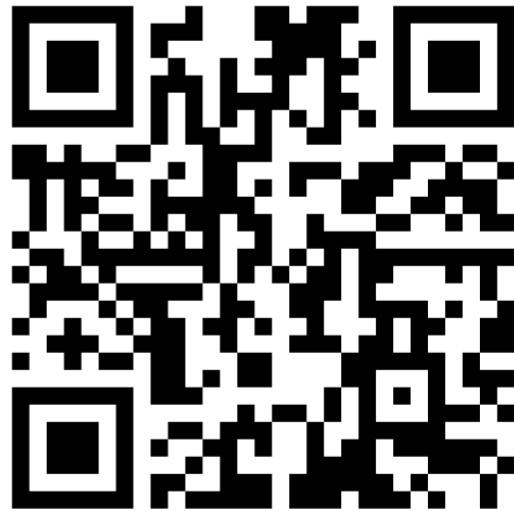
MOE KINDERGARTEN @ HORIZON

ON TO A STRONG START!








QUESTIONS?

https://padlet.com/mk_horizon/ia7t3psv2dyk6pw1



MK@HORIZON

-  Situated within Horizon Primary School
-  Started operations in 2020 with 160 K1 children
-  In 2021, 300 K1 and K2 children
-  Tel: 6235 6960
-  Email: mk_horizon@moe.edu.sg



MK@HORIZON LEARNING ENVIRONMENT



A TYPICAL DAY AT THE MK

Sample Timetable

	Monday	Tuesday	Wednesday	Thursday	Friday
8.00am – 8.10am	Arrival and Circle Time				
8.10am – 8.50am	Motor Skill Development	HI-Light and Learning Centre Time	Outdoor	HI-Light and Learning Centre Time	Music and Movement
8.50am – 9.10am	HI-Light and Learning Centre Time		HI-Light and Learning Centre Time		Motor Skill Development
9.10am – 9.40am		Outdoor			
9.40am – 9.50am	Toileting				
9.50am – 10.10am	Snack				
10.10am – 11.10am	Starlight (MTL)	Starlight (MTL)	Starlight (MTL)	Starlight (MTL)	Starlight (MTL)
11.10am – 11.50am	Starlight (EL)	Starlight (EL)	Starlight (EL)	Starlight (EL)	Starlight (EL)
11.50am – 12 noon	Closure and Dismissal				

Learning Centre



Let's Pretend!

Welcome to
Horizon Clinic



Learning Centre

Let's Create!

Check out our little
artists at work!



Learning Centre

Let's Read!

Learning
language the fun
way!



moe
KINDERGARTEN
@ HORIZON

Learning Centre

Let's Fix /
Let's Find Out!

Having fun with
numeracy!



*Photographs were taken pre-COVID-19



Let's
Construct!

Learning
Centres

The logo for MOE Kindergarten @ Horizon. It features the letters 'moe' in a stylized, lowercase font with a color gradient from purple to yellow. Below 'moe' are the words 'KINDERGARTEN' and '@ HORIZON' in a smaller, uppercase font. To the left of the text is a colorful graphic of a stylized sun or wave with a rainbow gradient.

moe
KINDERGARTEN
@ HORIZON



Eating
yummy
snacks
together!



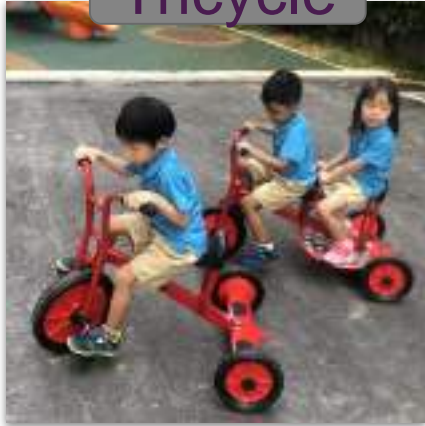
Snack
Time!



*Photographs were taken pre-COVID-19

IT'S TIME FOR OUTDOOR PLAY!

Tricycle



Play time at the Court



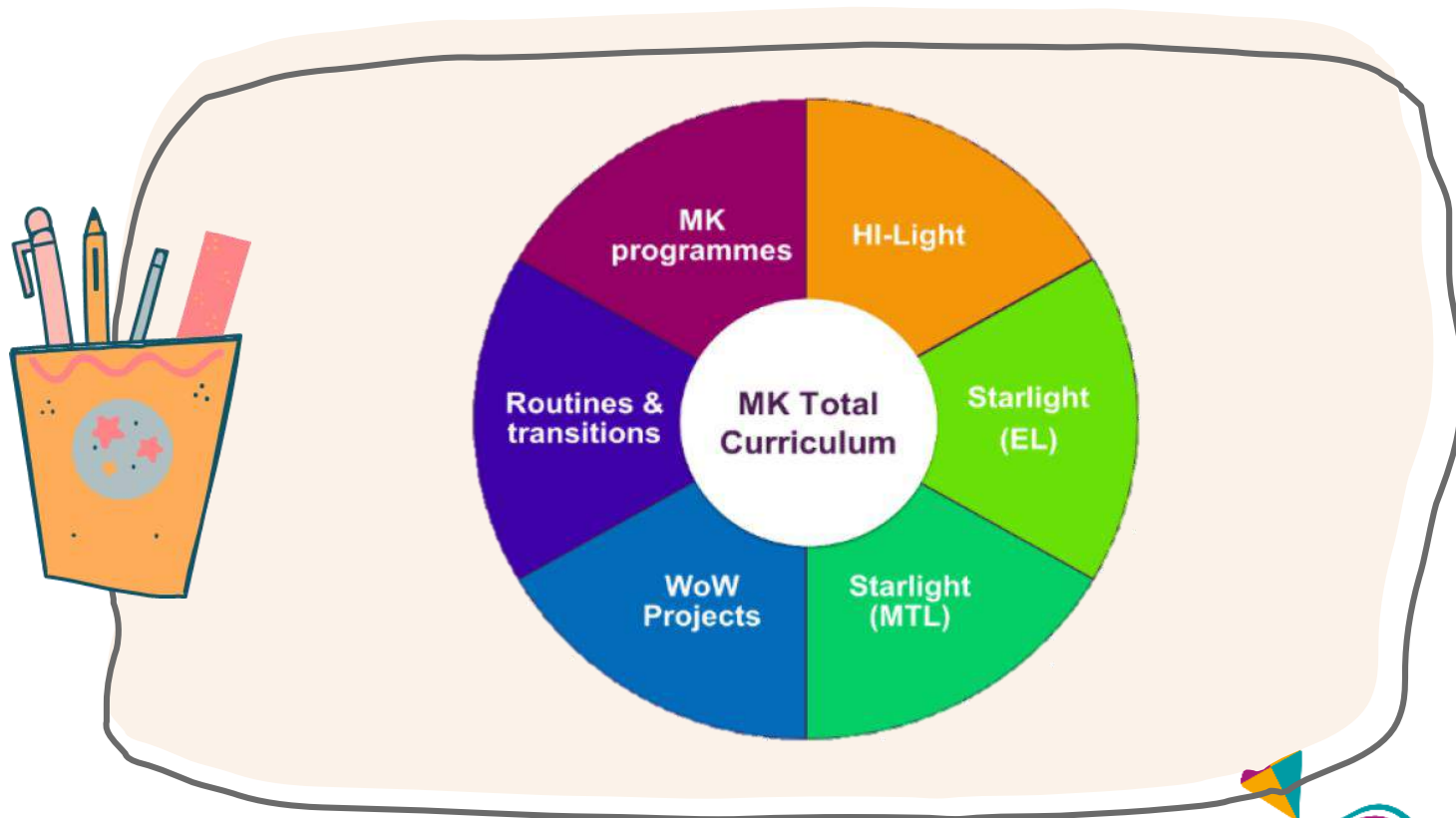
Playground

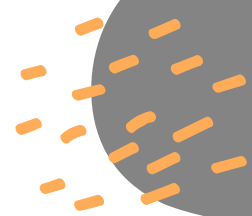


OUR FLAGSHIP PROGRAMMES



MK Total Curriculum





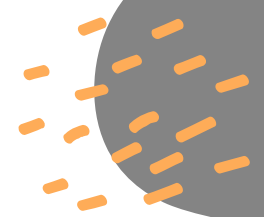
What do our children enjoy in MK?



HI-Light Programme

- Aesthetics and creative expression
- Discovery of the world
- Language and literacy
- Motor skills development
- Numeracy
- Social and emotional development

HI-Light Programme



ADOPTS AN INTEGRATED APPROACH TO LEARNING.

WHAT'S INSIDE MY BODY?



*Discovery of the World & Social and Emotional Development

Aesthetics and Creative Expression & Social and Emotional Development

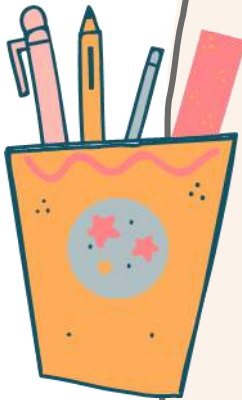


Language and Literacy



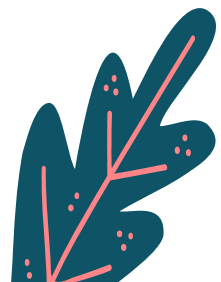
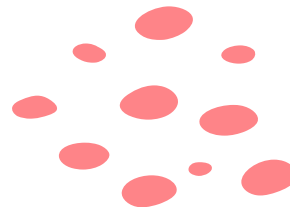
Starlight Literacy Programme

- Use of songs and stories set in the local context.
- Shared Reading using Big Books.
- Activities were customised to suit the needs of the children.
- Focuses on listening and speaking skills.
- Children will be guided to learn to read and write words in a relevant context.





Uses resources with a **distinct Singapore flavour** – learning in a real and familiar context



Respond to Big Book – Dramatisation / Cookery



*Shared Reading using Big Book



Literacy Stations



Forming letters



Sequencing and retelling a familiar book



Vocabulary – Matching word to picture cards



*Photograph was taken pre-COVID-19

Weeks of Wonder (WoW)



'Post Office' –
Mailing letters at our
mailbox.



Learning about footprints as
part of a crime scene
investigation activity.



Exploring more about 'Magnets'
by creating their own DIY
compass.

'Bats are Scary Cool'. Children
explored how to make their
bats fly.



Routines & Transitions

Health
Check



Routines & Transitions



Snacks





Outdoor





Centred-based Programmes

- 7 Habits
- Read for Joy
- NurtureKids

Mother Tongue



STARLIGHT

IS A LITERACY PROGRAMME

Bintang Kecil

繁星程华文课

விண்மீன்கள் பாடத்திட்டம்



Objective

CHILDREN AS ACTIVE LEARNERS, THEY ENJOY USING THEIR MOTHER TONGUE, COMMUNICATE CONFIDENTLY AND APPRECIATE LOCAL ETHNIC CULTURE.

Focus Of MTL Lesson

- Communication
- Interaction
- Culture



*Photograph was taken pre-COVID-19

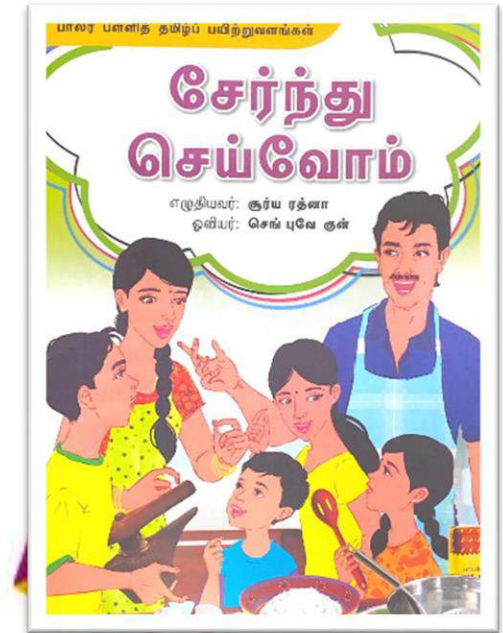


How is the MTL conducted?

- **Daily MTL lesson**
- **Using Big Books and Read Aloud Books**
- **Songs and stories written by local writers with local context and Singapore Flavour**
- **Focuses on listening and speaking skills**



Big Books with Singapore Flavour & Context



Big Book Activities



Reading Together



Peer Reading



*Photograph was taken pre-COVID-19
Dramatization



Family Based Activities



Writing



*Photograph was taken pre-COVID-19



Writing on Different Mediums



A Peek At The CLASSroom

Children @ work
Learning Through Play



Weeks of Wonder



奥秘探索



Minggu Untuk Meneroka



அதிசய வாரம்
moe
KINDERGARTEN
@ HORIZON

Thank You






KINDERGARTEN CARE (KCARE)



KINDERGARTEN CARE

Our Programme

-  Time and space for children to play, explore and discover in a specially designed environment with carefully chosen resources
-  Operates 7.00am – 7.00pm, Mondays to Fridays, including school holidays
-  Operated by MOE-appointed service providers, based on MOE requirements and guidelines



*Photographs was taken pre-COVID-19











Orientation

KINDERGARTEN CARE

Our Programme

A variety of play experiences

(A) Modular Activities

-  Art & Craft
-  Cookery
-  Gardening
-  Music, Movement & Dramatisation
-  Sand & Water play
-  Tinkering

(B) Free Play



KCare Environment (Indoor)



Cookery Room



Art and Craft/Tinkering Room

Sand & Water play area



Music wall

Sensory garden

KCare Environment (Outdoor)



KINDERGARTEN CARE

COOKERY



KINDERGARTEN CARE

GARDENING



*Photographs was taken pre-COVID-19



KINDERGARTEN CARE

SELF HELP SKILLS



FREE PLAY





SCHOOL HOLIDAY PROGRAMME ROLE PLAYING THEIR FAVOURITE CHARACTERS IN THE STORY




*Photographs were taken pre-COVID-19

A SMOOTH TRANSITION TO MK



K1 ORIENTATION

A Smooth Transition to MK

 You and your child will be invited to an **orientation session** before the start of the K1 year, where you will meet with the kindergarten teachers and classmates. This session will help to induct your child to the new learning environment.



*Photograph was taken pre-COVID-19

K1 ORIENTATION 2019



*Photographs were taken pre-COVID-19

K1 ORIENTATION 2019



*Photographs were taken pre-COVID-19

K1 ORIENTATION 2019



*Photographs were taken pre-COVID-19

FIRST TWO DAYS OF TERM 1



“K2 CELEBRATES”



K2 CELEBRATIONS

- The K2 Celebrations mark the completion of the K2 child's pre-school years at MK
- Reflects MK's belief in a holistic view of pre-school children's development
- The children will be involved in planning and executing the celebrations, showing their capabilities and accomplishment



*Photographs was taken pre-COVID-19



OUR PARTNERSHIPS

Close collaborations with primary schools to facilitate transition to P1

- 🎈 Opportunities for interaction with primary school students
- 🎈 Five-week experiential component in curriculum in K2 to support transition to P1
- 🎈 Collaboration with lower primary teachers to establish shared understanding about children's learning and development



*Photograph was taken pre-COVID-19

OUR PARTNERSHIPS



*Photographs were taken pre-COVID-19

OUR PARTNERSHIPS



Our Partnerships



OUR PARTNERSHIPS

Strong partnerships with families and the community to enrich children's learning experiences



*Photographs was taken pre-COVID-19



EMAIL TESTIMONY FROM MR SHAMEEM (FATHER OF FIZA , K2 Kind Kiwis 2021)



"Our daughter is taking Tamil at MK, teacher Ms Suba was very helpful in giving her extra attention and encouragement for her to pick up Tamil and converse in Tamil. As we don't speak Tamil at home, we are grateful for the help Ms Suba provided in guiding us parents initially. Also Ms Suba used to give an overview in English for the home-based activities which was very much helpful for us."

Thank you,
Shameem

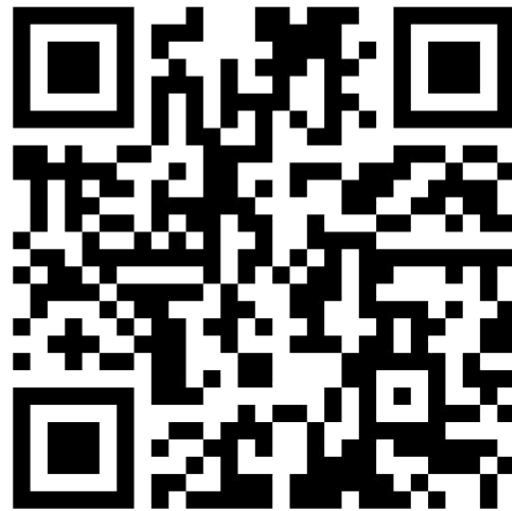


2021 MOE KINDERGARTEN (MK) REGISTRATION EXERCISE FOR 2022 ADMISSION




QUESTIONS?

https://padlet.com/mk_horizon/ia7t3psv2dyk6pw1



ONLINE REGISTRATION FOR 2022 KINDERGARTEN 1 ADMISSIONS

 From 5 February 2021 (Friday), 9am to 9
February 2021 (Tuesday), 4pm

 Register your child at

www.moe.gov.sg/mk-register



ONLINE REGISTRATION FOR 2022 KINDERGARTEN 1 ADMISSIONS

Access the MK Registration page via the QR Code or URL link below:



www.moe.gov.sg/mk-register

If you need help, you can refer to the step-by-step guide to the MK online registration on the MK website (www.moe.gov.sg/mk-register). You can also contact the MK directly, if you require assistance during the registration period.

Parents will be informed of the registration outcome via e-mail by 31 March 2021.

For more information on MK matters, please visit the MK website (www.moe.gov.sg/mk).



Priorities & Balloting

All children with Singapore citizenship are automatically eligible for enrolment into all MOE @ Kindergarten, however please be reminded of the priority orders, which can be found at the MOE website.

	Priority Order
#1	Income
#2	Siblings in MK / Horizon Primary School
#3	EYC *
#4	Permanent Resident *

*If there are children whose parent is a staff member of the MK or primary school, they will be considered first.



Priorities & Balloting

- 🎈 A school-based MK will generally take up to about **160 children**.
- 🎈 Balloting is conducted when the number of registrants exceeds vacancies at the MK. It takes into consideration citizenship (where applicable) and the distance between your home and the MK in the following order:

	Balloting priorities
#1	Children living within 500m of the MK.
#2	Children living between 500m and 1km of the MK
#3	Children living 1km or more from the MK.

Non SC child with SC parent

Your child may be considered for MK admission, if there are still vacancies in the MK after all SC and PR children have been admitted.

You may contact your preferred MK directly to check on the available vacancies for K1 admission in 2022, you may contact your preferred MK directly from Sep 2021 onwards.

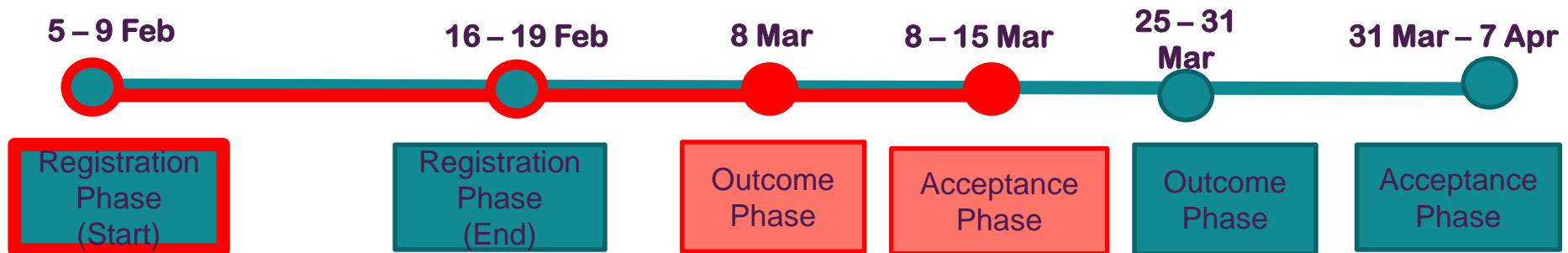
Admission is not guaranteed due to limited vacancies.



Timeline Open Admission (for non EYC children)



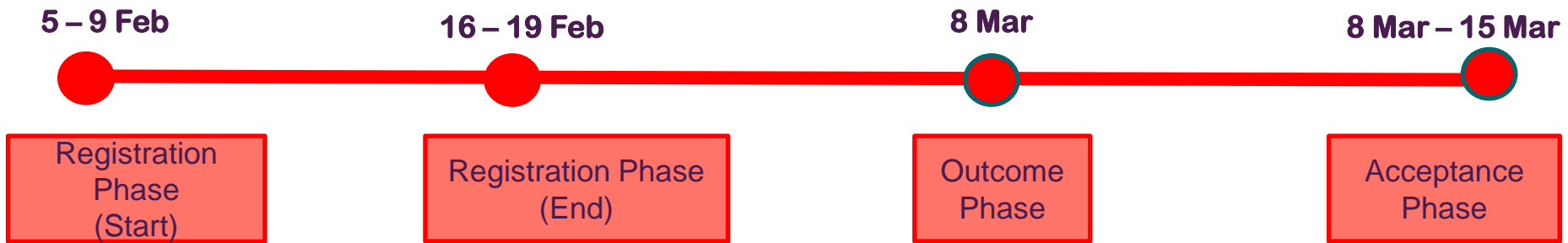
Timeline Admission (both EYC and OA)



MK-EARLY YEARS CENTRE (EYC) COLLABORATION



Timeline EYC Admission



You will receive an outcome email from MOE to confirm your child's enrolment in the partner MK. You should accept the offer by **8 Mar 2021** after which the offer will lapse.



MK-EYC COLLABORATION


Pilot collaboration with Anchor Operators (AOPs) on a new pre-school service model to provide a continuum of quality and affordable pre-school education for children aged two months to six years.

Early Year Centres	Partner MOE Kindergarten
PCF Sparkletots Preschool@ Punggol Shore 50 Edgefield Plains S820665	MOE Kindergarten @ Horizon



MK-EYC COLLABORATION

Eligibility Criteria

 Nursery 2 (N2) children enrolled in a partner Early Years Cent and who meet the eligibility criteria and fulfill the conditions, are assured of a K1 place in this MK:

Criteria

- Child must be enrolled in the EYC **by 31 Jan 2021**
- Child must be a Singapore Citizen or Singapore Permanent Resident

Conditions

- Child must remain enrolled in the same EYC **until 31 Dec 2021**
- Child must be a Singapore Citizen or Singapore Permanent Resident on the day of enrolment in the MK



 www.moe.gov.sg/mk

 mk_horizon@moe.edu.sg

 **contact: MK 6235 6960**

HPS 6753 5411

